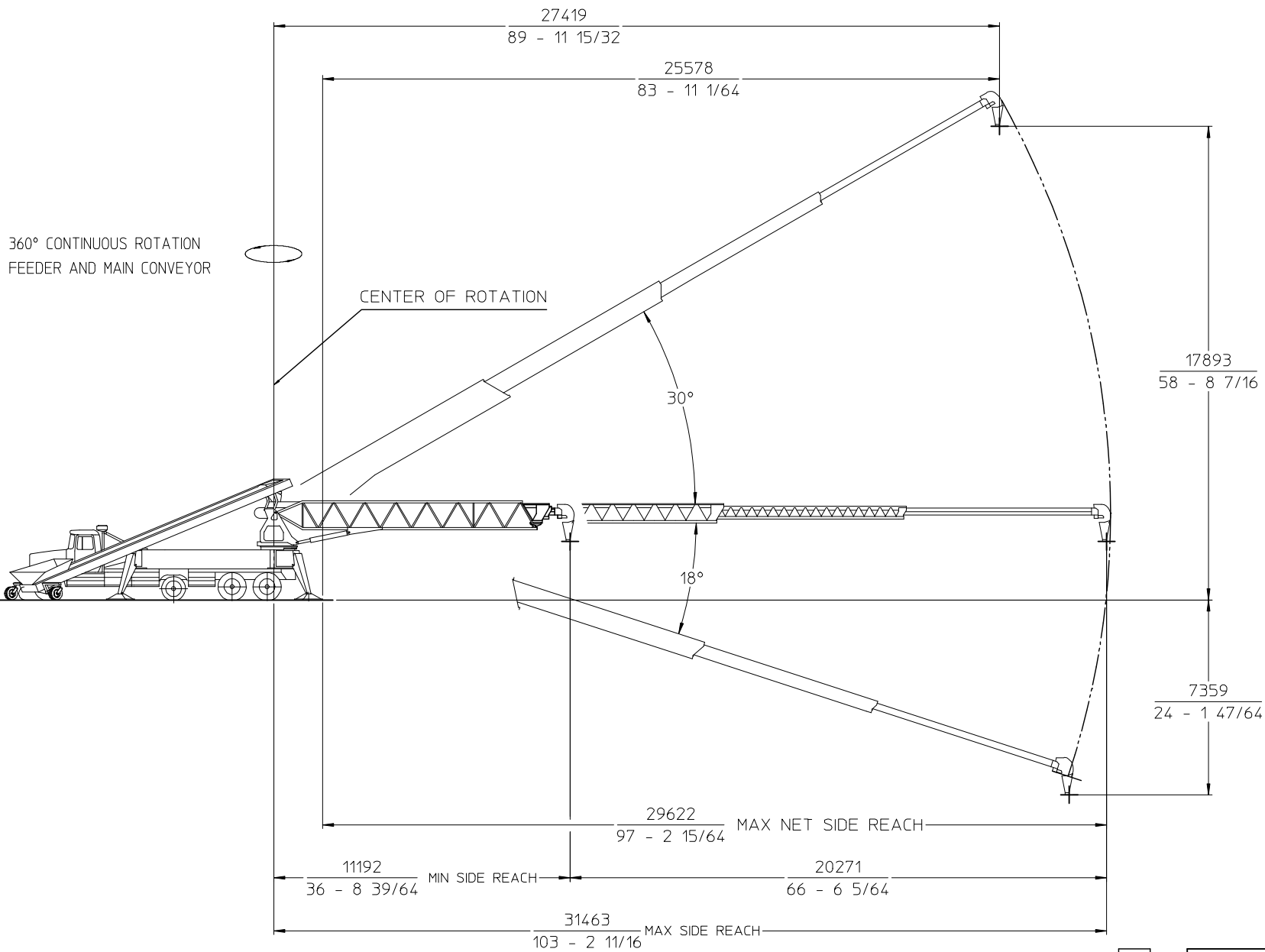


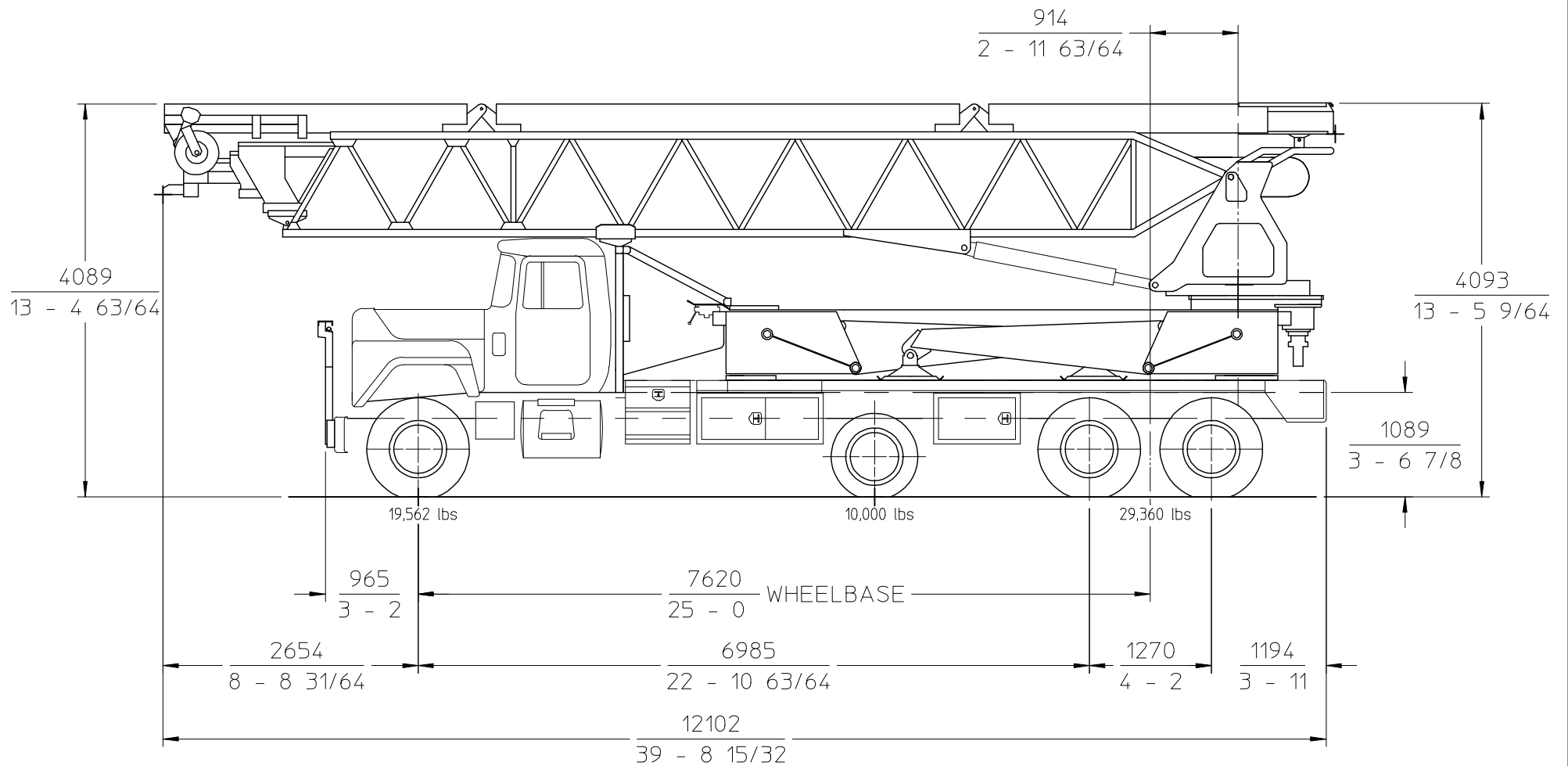
105 Conveyor



INFO

NO MANUAL REVISIONS		Finishing tolerances codes	Revision index	Weight
For surface finish, welding finish and machining finish dimensional tolerances refer to KS 62/8-15		tolerances per DIM 62/8 B	B	lbs
Description	Raw Mat.	Dimensions	DIM	
<input type="checkbox"/> Irred <input type="checkbox"/> degreased <input type="checkbox"/> primed RAL 9017 40 µm <input type="checkbox"/> primed according to KS 3889/2 (weldable)	<input type="checkbox"/>	<input type="checkbox"/> Description TELEBELT 105 RANGE DIAGRAM	Scale 1:70	
Conservation specifications		Part-No. A007510 Format A1		
Paint specification, 75µm	RD	Date	30-Dec-99	
Rev. by: DM	ECN No. 1597	Date	27-Aug-99	
Drawn by: DM	Rel. by:	Checked by:	Manufactured by:	
Manufactured to the required	ECN No.	Part No.	Manufacturer's Code No.	Subcontract
Putzmeister Inc. Sturtevant WI 53177		Putzmeister Inc. Sturtevant WI 53177		
Machine Operation		Subcontract		

105 Conveyor



TELEBELT TB105
 MACK RD 688, 350 HP, 300" WHEELBASE
 58922 LBS GVW
 WIDTH: 102"

INFO

NO MANUAL REVISIONS				Finishing tolerances codes		Revision index	Weight
For surface finish, welding finish and machining finish dimensional tolerances refer to KS 64218-US				Weldments per DIN 8570 B	Machined Parts per DIN 7168 rough	B	lbs
Description		Raw Matl.		Dimensions		DIN	
Trimed	<input type="checkbox"/>	degreased	<input type="checkbox"/>	primed RAL1017 40 µm	<input type="checkbox"/>	Description TELEBELT 105 RANGE DIAGRAM	
primed according to KS 38894/2 (weldable)				<input type="checkbox"/>		Scale 1:40	
Conservation specifications				<input type="checkbox"/>		Part-No. A007510	
Paint specification: 70µm NO				<input checked="" type="checkbox"/>		Format A3	
Rev by	DMW	ECN No:	T597	Date	30-Dec-99	Sturtevant WI 53177	
Dwg by	DMW	Rel by		Date	27-Aug-99	Sheet 3 of 3	
Dimensions to be inspected	PMR Receiving OC Stamp	Part No.		Manufacturer's Code No.		Subst. for Subst. through	
Putzmeister Inc. Racine Operation							